



## 规格

### 支持的硬件

MiiNePort E1  
MiiNePort E1-H  
MiiNePort E1-T  
MiiNePort E1-H-T

### 软件

OS: eCos

软件开发工具: MiiNePort-IDE

**Windows Real COM驱动:** Windows 98/ME/NT/2000, Windows XP/2003/Vista/2008/7 x 86/x 64, Embedded CE 5.0/6.0, XP Embedded

**Fixed TTY驱动:** SCO Unix, SCO OpenServer, UnixWare 7, SVR 4.2, QNX 4.25, QNX 6, Solaris 10, FreeBSD, AIX 5.x

**Linux Real TTY 驱动:** Linux kernel 2.4.x, 2.6.x, 3.0.x

操作模式: Real COM, Ethernet Modem

Wizard: Project/SNMP/CLI(Telnet)/SCM/User Configuration

串口/网口测试工具: PComm Lite (Serial/TCP Server/TCP

Client)

搜索/上传固件实用程序: NPort Search Utility

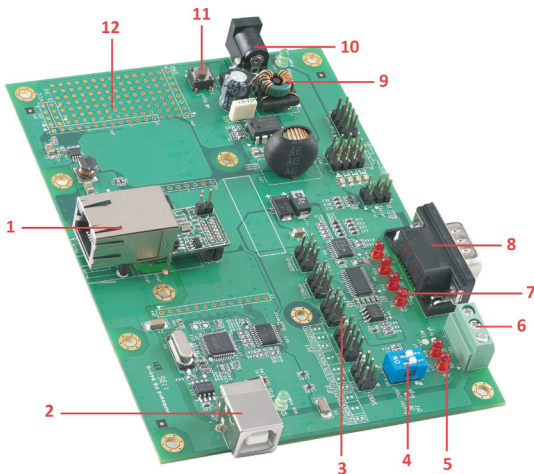
**串口联网示例代码 (已集成至MiiNePort-IDE)**

1. TCP Server Echo
2. TCP Server to Serial (Single connection)
3. TCP Server to Serial (Multi-connection)
4. TCP Client Echo
5. TCP Client to Serial (Startup)
6. TCP Client to Serial (Any character)
7. TCP Client to Serial (Designed destination TCP/IP port from serial)
8. UDP echo
9. UDP to serial

### 文件

**API Function Helper, User's Manual, Getting Started, Schematic Design Guide, Quick Installation Guide**

## 硬件测试板



Number	Description
1	MiiNePort E1 Module
2	USB Type B Connector (Debug).
3	Configurable Pin/Serial Interface Jumper
4	Digital Input Switch
5	Digital Output LED
6	DIO Terminal Block
7	Serial Line LED
8	Serial Port
9	Power LED
10	Power Jack
11	Restart Button
12	Circuit Pad

## 订购信息

### 可选型号

**MiiNePort E1-SDK:** MiiNePort E1系列软件开发套件, 含MiiNePort E1模块

注: 对适用的模块可用顺序列表, 请参阅MiiNePort E1的数据。

### 包装清单

- MiiNePort E1-SDK模块
- MiiNePort E1-SDK测试版
- 通用电源适配器
- 2根电源线
- USB线
- 双绞线
- 交叉以太网线
- 文档和软件光盘
- 快速安装指南 (打印版)
- 保修卡